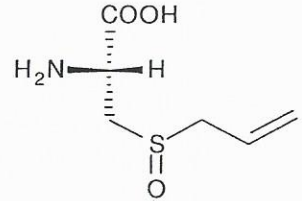




INDOFINE Chemical Company, Inc.

121 Stryker Lane, Building 30
Hillsborough, NJ 08844 USA
Phone: (908) 359-6778; Fax: (908) 359-1179



HPLC ANALYSIS

027253S **(+)-L-ALLIIN** **Lot No.: 15081713**

IDENTIFICATION

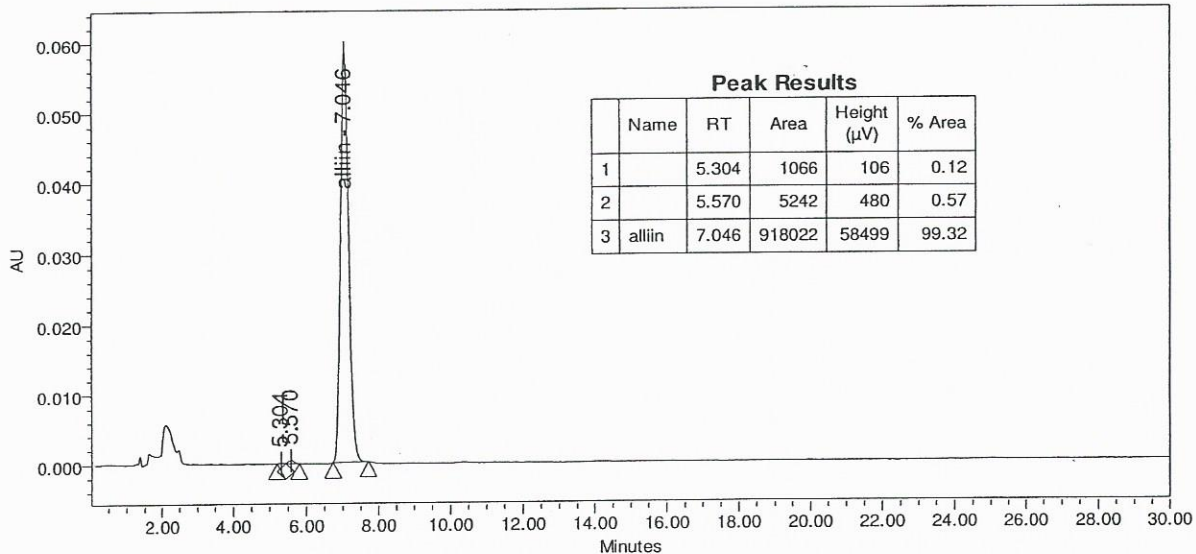
CAS number	[556-27-4]
Chemical names	(S)-3-(Allylsulfinyl)-L-alanine
Molecular formula	C ₆ H ₁₁ NO ₃ S
Molecular weight	177.23

CERTIFICATE OF ANALYSIS

Appearance	White powder	
Melting point	154-155°C	
Thin layer chromatography	support	Silicagel
	solvent	n-Butanol/n-propanol/acetic acid/water (3/1/1/1:V/V/V/V)
	detection	Ninhydrine
Moisture	3.1%	
Residual solvents	<0.5%	
[α] _D	+ 61° (c=0.8 in water)	
Storage	Store at room temperature in a dry and dark place.	

HIGH PERFORMANCE LIQUID CHROMATOGRAPHY

Column	Nova pak C18® (3.9 x 150 mm), particle size 4 μm		
Solvent	THF / 1.4 Dioxane / Acetonitrile / Buffer phosphate pH7.1 (1/30/3/85 , V/V/V/V)		
Flow rate	1ml/min		
Detector	UV visible 337 nm		
Sample solvent	Derivatization:	18ml of a solution:	(140mg o-phthalaldehyde in 5ml methanol + 100 μl tert-butylthiol) in 50 ml buffer ph9
		2 ml of a solution:	15 mg of alliin in 20 ml methanol/water (50/50 , V/V)



Assay by an HPLC method.

The values given on the 'Certificate of Analysis' are the results determined at the time of analysis.